



RENT A VACUUM DEHYDRATOR FOR WATER & SOLID REMOVAL



Description:

The dewatering and filtration unit FAM is a bypass unit which has been specially designed for removing dirt, water and gases from lubrication and hydraulic fluids.

Advantages:

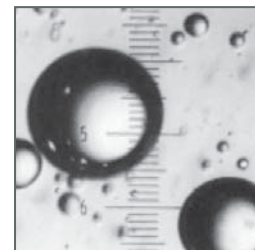
- Separation of 100% free and 90% dissolved water through vacuum dehydration
- Separation of particles with high contamination retention capacity ISO 13/10 attainable
- Removal of 100% free and 100% dissolved gases
- AquaSensor water sensor monitors water content.

Negative Effects of Water on Oils:

It is almost certain that there is water in a hydraulic system. The most frequent causes are: ambient humidity, splash water, and new oil. Mineral based oils show a faster aging process, if there is water in the oil. This aging process is accelerated through contamination particles by a catalytic effect. The additives are quickly used up and the lifetime of the operating fluid is much shorter than that of "dry" oil.

Water in Mineral Oil causes:

- Ageing of the fluid
- Fluid deterioration
 - Reduced air separating results in: Cavitation
 - Increased foaming results in: Cavitation
 - Reduced lubrication results in: Vibration & Wear
 - Erratic operation results in: Inaccuracy
- Depletes additives
- Clogged filters



tiny water droplets in hydraulic fluid
(1 unit equals 10 micron)

1-800-825-4969

11616 Wilmar Blvd.,
Charlotte, NC 28273

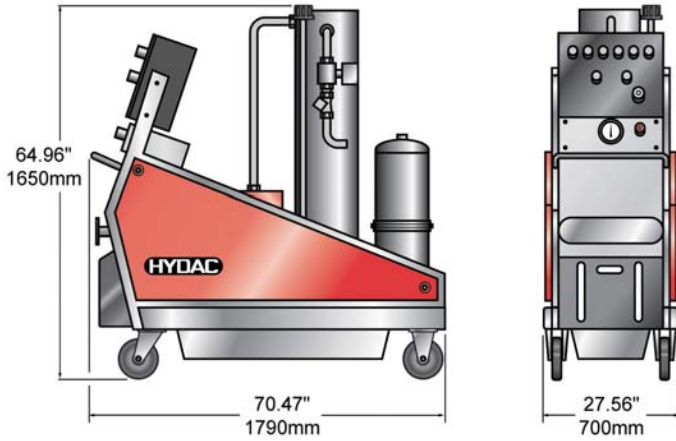
www.Lhtech.com



Livingston & Haven
DRIVING EFFICIENCY



FAM 30 (with heater and AquaSensor)



Technical Data:

	FAM 30
Filter Size	OLF-30
Filter Element	N15DMxxx(2x)
Capacity of Pressure Vessel gal(liters)	10.5(40)
Solid Contamination to ISO 4572 lbs(g)	2.2(1000)
Electric Clogging Indicator	VM 2C.x
Bypass Cracking Pressure psi(bar)	29 (2)
Pump Type	Gear pump
Flow rate gpm	10
Maximum Operating Pressure psi(bar)	87(4.5)
Viscosity Range (without) SUS (cst)	75-2500(15-500)
Electrical Cable Length ft (m)	32 (10)
Hose Length ft (m)	16 (5)
Hose Material	NBR
Inlet - Outlet	M52x2-M36x2
Seal Material (FPM for operating fluid B, X)	NBR
Dry Weight (lbs.)	970
Fluid Temperature	50°F to 175°F
Ambient Temperature	5°F to 105°F
Max. Free Water Removal Rate* (gallons/hour)	1
Attainable water content (ppm)	<100 ppm

FAM 30 RENTAL PROGRAM

Rental Charges

\$1,500/Week or \$3,500/Month

NOTE:

- In addition to the rental charges, there will be a charge for Freight and \$500 Preparation Charge.
- Preparation Fee covers inspection and cleaning of the unit after return. There will be an additional cost for replacement elements, if required.
- The Rental Period begins on the date the Equipment is received by Lessee at the designated facility and the Rental Period ends on the date the Equipment is received by L&H at the designated L&H facility

For more details and scheduling contact our Field Service Department at (704) 504-8301 ext. 7583

Livingston & Haven

11616 Wilmar Blvd. Charlotte, NC 28273
 Phone: (704) 504-8301 ext. 7583 • Toll Free: (800) 825-4969
 www.Lhtech.com

1-800-825-4969

11616 Wilmar Blvd.,
 Charlotte, NC 28273
 www.Lhtech.com



Livingston & Haven
 DRIVING EFFICIENCY