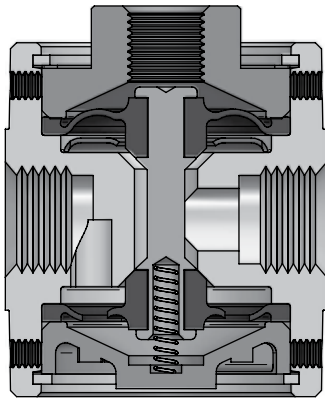


# AIR-PILOT VALVES

## INTRODUCTION

*Air-Pilot Valves use a remote air signal to shift the valve. A single Air-Pilot Valve uses one air-pilot signal to shift the valve and internal air pressure, or spring, to return it when the signal is removed. A double Air-Pilot Valve uses a momentary air-pilot to shift the valve to one position and a second momentary air-pilot signal to return it to its original position.*

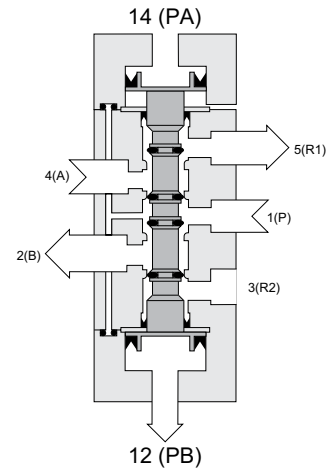
Since Air-Pilot Valves use air piping only, they are inherently explosion-proof or can be mounted close to work, isolating operators or electrical signals away from the environment. Further, less expensive, smaller electrical or manual operators can be used as pilots for one or several air-piloted valves in a system, reducing overall cost.



**250A-3-10-20**  
Single Air Pilot, Unactuated

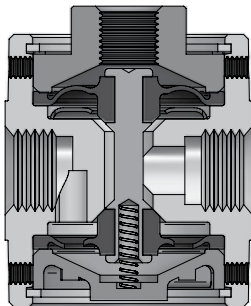
### AIR-PILOTED VALVE FEATURES:

- Simple construction.
- No lubrication.
- Reliable operation.
- Compact and light weight.
- Mount in any direction.
- Cost effective.

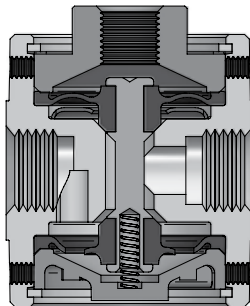


**H180-4A2**  
Double Air Pilot

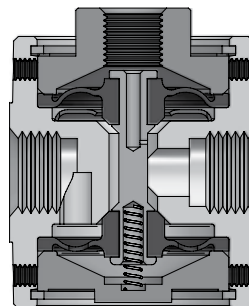
### DIFFERENCE BETWEEN "A" TYPE AND "AA" TYPE AIR-PILOT VALVES



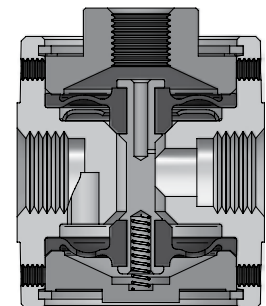
**250A**  
Normal Position



**250A**  
Operating Position



**250AA**  
Normal Position



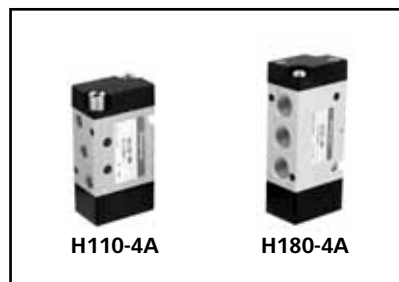
**250AA**  
Operating Position

Round "A" type valves require continuous pilot pressure to maintain the operating condition. Round "AA" type valves incorporate a bypass hole on the main stem and are for compressed air only. The bypass hole speeds up the valve and also helps the piloting valve maintain its operating condition during a momentary operation, even if there are small air leaks within the pilot line.

### EXAMPLES OF AIR-PILOT VALVES



**Round Type Valve Offering**



**Square Type Valve Offering**



**Specialty Round Type**

AIR-PILOT VALVES

<b>2-, 3-WAY VALVES</b>		<b>Ports</b>	<b>CFM*</b>	<b>Valves</b>	<b>Page</b>
<b>SMALL</b>	125A Series	1/8	18	125A	44
	125AA Series	1/8	18	125AA	46
	125 Interface Series	1/8	14	125LA, 125AH,	48
	Glue Valve Series	1/8	-	R322C, R561	53
<b>LARGE</b>	250A Series	1/4	50	250A	44
	250AA Series	1/4	50	250AA	46
	250 Interface Series	1/4	40	250AL, 250AH	49
	500 Series	1/2	160	500A, 500AB	50
	501 Series	1/2	220	501A, 501AA	51
	590 Series	3/4	260	590A, 590AB	50
	Glue Valve Series	1/4	-	R332	53

<b>4-WAY VALVES</b>		<b>Ports</b>	<b>CFM*</b>	<b>Valves</b>	<b>Page</b>
<b>SMALL</b>	H110 Series	10-32	14	H110-4A, H110-4A2, HA110-4A, HA110-4A2	52
	H180 Series	1/8	33	H180-4A, H180-4A2, HA180-4A, HA180-4A2	52
	TAC3 Series	1/4	31	42A, 42A2, 42PA	70
<b>LARGE</b>	250-4A Series	1/4	50	250-4A	45
	250-4AA Series	1/4	50	250-4AA	47
	501-4 Series	1/2	170	501-4A, 501-4AA	51

\*Nominal flow @100 psi



# 125A, 250A Valves

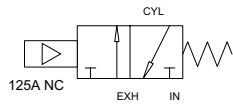
125A, 250A

**125 and 250 Series Air-Pilot Valves feature the classic Humphrey diaphragm-poppet principle. The unbalanced, air-spring return design assures bubble-tight sealing actuated, or unactuated. Compact design permits close proximity mounting to the work and fast cycling/quick exhaust.**

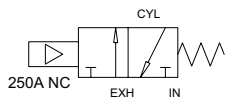
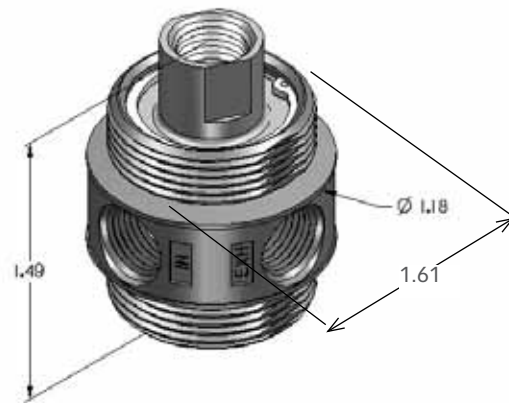
**These rugged 2- or 3- way valves are available in normally closed or normally open configurations, in standard or optional brass body construction (for alternate media).**

## Features and Benefits

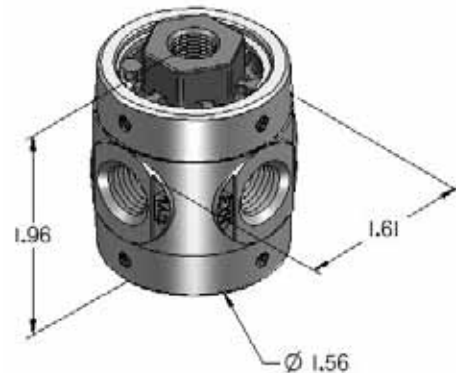
- "Bubble Tight" seal.
- Full ported 1/8" orifice, 1/8 PIPE ports, and 1/4" orifice, 1/4 PIPE ports.
- Fast cycling, high flow, quick exhaust.
- Reliable operation in lubricated or not lubricated systems. No sliding seals.
- Hard plumb mount, base mount, or panel mount (use panel mount nuts for 125 series or inverted mounting base for 250 series).
- Buna N seals standard. Fluorocarbon seals optional.



125A-NC



250A-NC



## SPECIFICATIONS


Design Principle:	Pressure Unbalanced – Air Return, Spring Assist
Porting Type:	2- or 3-Way
Port Size:	125: 1/8 PIPE; 250: 1/4 PIPE
Media:	Air, Inert Gas, Liquid (brass body)
Pressure Range:	0–125 PSIG
Temperature Range:	-20°F to 225°F
Flow @100 PSIG:	125: 18 CFM, 509 LPM (Cv=0.3) 250: 50 CFM, 1415 LPM (Cv=0.8)

## HOW TO OBTAIN SPECIFICATIONS FOR A PARTICULAR VALVE(S)

- ✓ Go directly to [www.humphrey-products.com/dynamic/products](http://www.humphrey-products.com/dynamic/products)
- ✓ Or, visit [www.humphrey-products.com](http://www.humphrey-products.com) and select "Online Product Guide."
- Once you have followed the steps to get the valve you need, select "Download Spec Sheet." Doing this will create a personalized PDF of the valve, which you may save to your computer and print at your convenience. These spec sheets are helpful when placing your order(s).

## HOW TO ORDER HUMPHREY VALVES AND ACCESSORIES

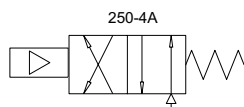
- ✓ Go directly to: [www.humphrey-products.com/?q=content/find-distributor](http://www.humphrey-products.com/?q=content/find-distributor)
- ✓ Or, visit [www.humphrey-products.com](http://www.humphrey-products.com), select "Find A Distributor," and input your information to locate a distributor nearest you.
- Or, call Customer Service at 1-800-477-8707 for the name and phone number of your local distributor.

 **HUMPHREY PRODUCTS ARE SOLD WORLD-WIDE THROUGH AUTHORIZED DISTRIBUTORS**

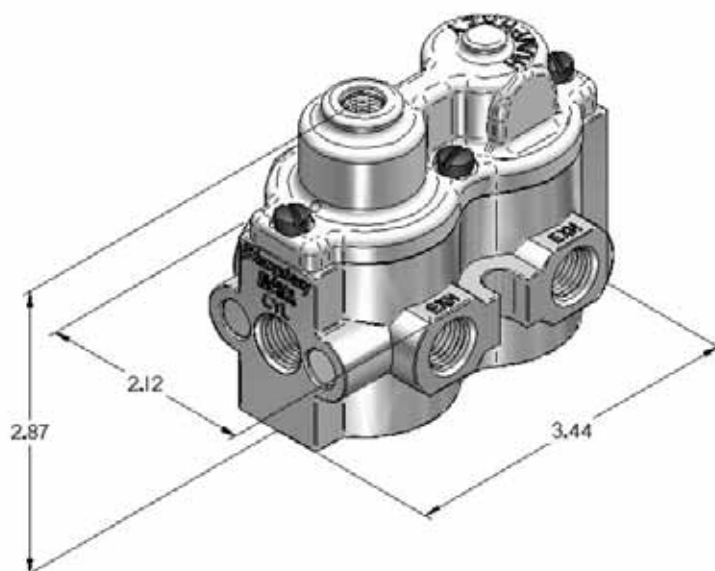
**250-4 Series Air-Pilot, 4-way Valves feature the classic Humphrey diaphragm-poppet principle, essentially two 3-way 250 series in a common body. The unbalanced, air-spring return design assures bubble-tight sealing actuated, or unactuated. Full porting permits fast cycling and quick exhaust.**

### Features and Benefits

- "Bubble Tight" seal.
- Full ported 1/4" orifice, 1/4 PIPE ports.
- Fast cycling, high flow, quick exhaust.
- Reliable operation in lubricated or not lubricated systems. No sliding seals.
- Hard plumb mount, use body threads or mounting base.
- Buna N seals standard. Fluorocarbon seals optional.



250-4A



#### HOW TO OBTAIN SPECIFICATIONS FOR A PARTICULAR VALVE(S)

- Go directly to [www.humphrey-products.com/dynamic/products](http://www.humphrey-products.com/dynamic/products)
- Or, visit [www.humphrey-products.com](http://www.humphrey-products.com) and select "Online Product Guide."
  - Once you have followed the steps to get the valve you need, select "Download Spec Sheet." Doing this will create a personalized PDF of the valve, which you may save to your computer and print at your convenience. These spec sheets are helpful when placing your order(s).

#### HOW TO ORDER HUMPHREY VALVES AND ACCESSORIES

- Go directly to: [www.humphrey-products.com/?q=content/find-distributor](http://www.humphrey-products.com/?q=content/find-distributor)
- Or, visit [www.humphrey-products.com](http://www.humphrey-products.com), select "Find A Distributor," and input your information to locate a distributor nearest you.
  - Or, call Customer Service at 1-800-477-8707 for the name and phone number of your local distributor.

**Humphrey HUMPHREY PRODUCTS ARE SOLD WORLD-WIDE THROUGH AUTHORIZED DISTRIBUTORS**

#### SPECIFICATIONS

Design Principle:	Pressure Unbalanced – Air Return, Spring Assist
Porting Type:	4-Way
Port Size:	1/4 PIPE
Media:	Air, Inert Gas
Pressure Range:	10–125 PSIG
Temperature Range:	-20°F to 225°F
Flow @100 PSIG:	50 CFM, 1415 LPM (Cv=0.8)

## 125AA, 250AA Valves

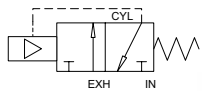
125AA, 250AA

**125 and 250 "AA" Series Air-Pilot Valves feature the classic Humphrey diaphragm-poppet principle, but incorporates an internal compensating orifice to achieve faster response and/or a momentary signal/maintained position functionality (see Air-Pilot Valves introduction page). The unbalanced, air-spring return design assures bubble-tight sealing actuated, or unactuated. Compact design permits close proximity mounting to the work.**

**These rugged 2- or 3-way valves are available normally closed.**

### Features and Benefits

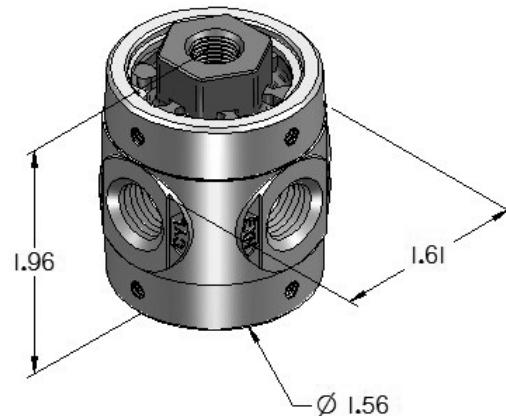
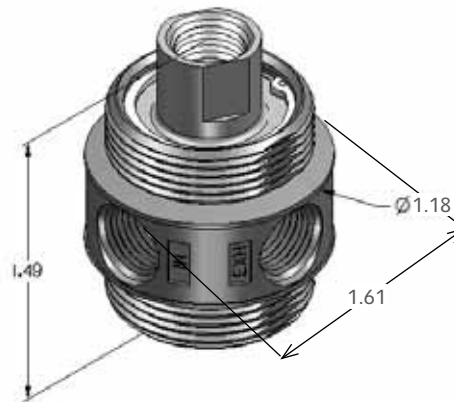
- "Bubble Tight" seal.
- Full ported 1/8" orifice, 1/8 PIPE, and 1/4" orifice, 1/4 PIPE.
- Fast cycling, high flow, quick exhaust.
- Reliable operation in lubricated or not lubricated systems. No sliding seals.
- Hard plumb mount, base mount, or panel mount (use panel mount nuts for 125 series or inverted mounting base for 250 series).
- Excellent for interlocking or sequencing applications.
- Buna N seals standard. Fluorocarbon seals optional.



125AA



250AA



### SPECIFICATIONS FOR 125AA AND 250AA


Design Principle:	Pressure Unbalanced – Air Return, Spring Assist
Porting Type:	2- or 3-Way
Port Size:	1/8, 1/4 PIPE
Media:	Air
Pressure Range:	125AA: 10–125 PSIG; 250AA: 15–125 PSIG
Temperature Range:	-20°F to 225°F
Flow @100 PSIG:	125AA: 18 CFM, 509 LPM (Cv=0.3) 250AA: 50 CFM, 1415 LPM (Cv=0.8)

### HOW TO OBTAIN SPECIFICATIONS FOR A PARTICULAR VALVE(S)

- ✓ Go directly to [www.humphrey-products.com/dynamic/products](http://www.humphrey-products.com/dynamic/products)
- ✓ Or, visit [www.humphrey-products.com](http://www.humphrey-products.com) and select "Online Product Guide."
- Once you have followed the steps to get the valve you need, select "Download Spec Sheet." Doing this will create a personalized PDF of the valve, which you may save to your computer and print at your convenience. These spec sheets are helpful when placing your order(s).

### HOW TO ORDER HUMPHREY VALVES AND ACCESSORIES

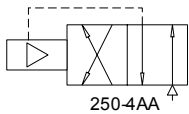
- ✓ Go directly to: [www.humphrey-products.com/?q=content/find-distributor](http://www.humphrey-products.com/?q=content/find-distributor)
- ✓ Or, visit [www.humphrey-products.com](http://www.humphrey-products.com), select "Find A Distributor," and input your information to locate a distributor nearest you.
- Or, call Customer Service at 1-800-477-8707 for the name and phone number of your local distributor.

 **HUMPHREY PRODUCTS ARE SOLD WORLD-WIDE THROUGH AUTHORIZED DISTRIBUTORS**

**250-4 "AA" Series Air-Pilot, 4-way Valves feature the classic Humphrey diaphragm-poppet principle, essentially two 3-way 250 series in a common body, but incorporates an internal compensating orifice to achieve faster response and/or a momentary signal/maintained position functionality (see Air-Pilot Valves introduction page). The unbalanced, air-spring return design assures bubble-tight sealing actuated, or unactuated. Full porting permits fast cycling and quick exhaust.**

### Features and Benefits

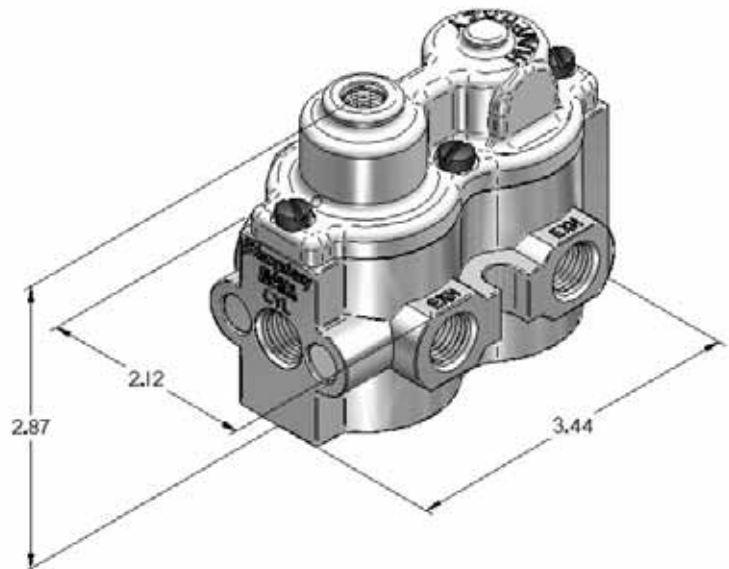
- "Bubble Tight" seal.
- Full ported 1/4" orifice, 1/4 pipe ports.
- Fast cycling, high flow, quick exhaust.
- Reliable operation in lubricated or not lubricated systems. No sliding seals.
- Hard plumb mount, body threads, or use mounting base.
- Excellent for interlocking or sequencing applications.
- Buna N seals standard. Fluorocarbon seals optional.



250-4AA



250-4AA



### HOW TO OBTAIN SPECIFICATIONS FOR A PARTICULAR VALVE(S)

- Go directly to [www.humphrey-products.com/dynamic/products](http://www.humphrey-products.com/dynamic/products)
- Or, visit [www.humphrey-products.com](http://www.humphrey-products.com) and select "Online Product Guide."
  - Once you have followed the steps to get the valve you need, select "Download Spec Sheet." Doing this will create a personalized PDF of the valve, which you may save to your computer and print at your convenience. These spec sheets are helpful when placing your order(s).

### HOW TO ORDER HUMPHREY VALVES AND ACCESSORIES

- Go directly to: [www.humphrey-products.com/?q=content/find-distributor](http://www.humphrey-products.com/?q=content/find-distributor)
- Or, visit [www.humphrey-products.com](http://www.humphrey-products.com), select "Find A Distributor," and input your information to locate a distributor nearest you.
  - Or, call Customer Service at 1-800-477-8707 for the name and phone number of your local distributor.

**Humphrey HUMPHREY PRODUCTS ARE SOLD WORLD-WIDE THROUGH AUTHORIZED DISTRIBUTORS**

### SPECIFICATIONS

Design Principle:	Pressure Unbalanced – Air Return, Spring Assist
Porting Type:	4-Way
Port Size:	1/4 IN
Media:	Air
Pressure Range:	15–125 PSIG
Temperature Range:	-20°F to 225°F
Flow @100 PSIG:	50 CFM, 1415 LPM (Cv=0.8)

## 125LA, 125AH Valves

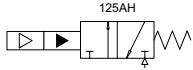
125LA, 125AH

**125 Series "Interface" Valves are ultra-low pilot pressure bleed valves. Pilot signaling pressures as low as 0.1 PSIG effectively blocks the bleed orifice and the internal, full pressure completes the shift to the actuated position. Primary valve is classic Humphrey diaphragm-poppet principle.**

**Ideal for fluidics, proximity switching and air jet sensing.**

### Features and Benefits

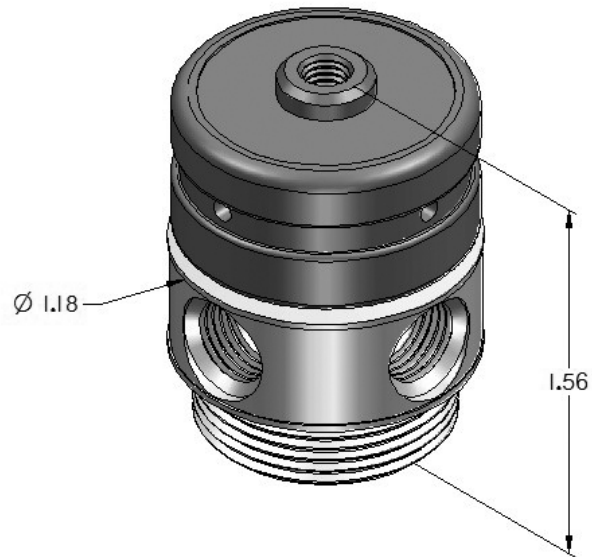
- Very fast cycling speeds.
- Super sensitive 125LA responds to 0.10–10 PSIG pilot pressure.
- Sensitive 125AH responds to 0.33–30 PSIG pilot pressure.
- Primary valve is 1/8" orifice, 1/8 PIPE ports.
- Threaded bottom for panel mount or optional subbase.
- Optional brass body.
- Optional bottom inlet.



125LA



125AH



### SPECIFICATIONS


Design Principle:	Pressure Unbalanced – Air Return, Spring Assist
Porting Type:	2- or 3-Way
Port Size:	1/8 PIPE
Media:	Air
Pressure Range:	30–125 PSIG
Temperature Range:	40°F to 125°F
Flow @100 PSIG:	14 CFM, 396 LPM (Cv=0.2)

### HOW TO OBTAIN SPECIFICATIONS FOR A PARTICULAR VALVE(S)

- ☞ Go directly to [www.humphrey-products.com/dynamic/products](http://www.humphrey-products.com/dynamic/products)
- ☞ Or, visit [www.humphrey-products.com](http://www.humphrey-products.com) and select "Online Product Guide."
- Once you have followed the steps to get the valve you need, select "Download Spec Sheet." Doing this will create a personalized PDF of the valve, which you may save to your computer and print at your convenience. These spec sheets are helpful when placing your order(s).

### HOW TO ORDER HUMPHREY VALVES AND ACCESSORIES

- ☞ Go directly to: [www.humphrey-products.com/?q=content/find-distributor](http://www.humphrey-products.com/?q=content/find-distributor)
- ☞ Or, visit [www.humphrey-products.com](http://www.humphrey-products.com), select "Find A Distributor," and input your information to locate a distributor nearest you.
- Or, call Customer Service at 1-800-477-8707 for the name and phone number of your local distributor.

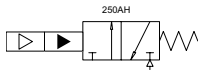
 **HUMPHREY PRODUCTS ARE SOLD WORLD-WIDE THROUGH AUTHORIZED DISTRIBUTORS**

250 Series "Interface" Valves are ultra-low pilot pressure valves. Pilot signaling pressures as low as 0.1 PSIG effectively blocks the bleed orifice and the internal, full pressure completes the shift to the actuated position. Primary valve is classic Humphrey diaphragm-poppet principle.

Ideal for fluidics, proximity switching and air jet sensing.

**Features and Benefits**

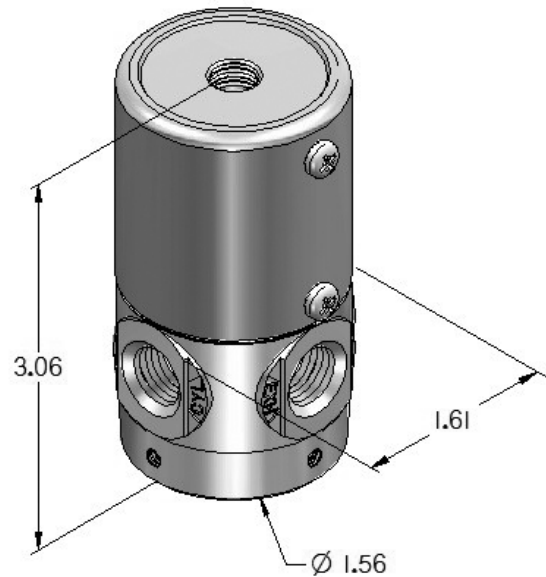
- Very fast cycling speeds.
- Super sensitive 250AL responds to 0.10–10 PSIG pilot pressure.
- Sensitive 250AH responds to 0.33–30 PSIG pilot pressure.
- Primary valve is 1/4" orifice, 1/4 PIPE ports.
- Optional brass body.
- Optional bottom inlet.



250AH



250AL



AIR-PILOT VALVES

**HOW TO OBTAIN SPECIFICATIONS FOR A PARTICULAR VALVE(S)**

- Go directly to [www.humphrey-products.com/dynamic/products](http://www.humphrey-products.com/dynamic/products)
- Or, visit [www.humphrey-products.com](http://www.humphrey-products.com) and select "Online Product Guide."
  - Once you have followed the steps to get the valve you need, select "Download Spec Sheet." Doing this will create a personalized PDF of the valve, which you may save to your computer and print at your convenience. These spec sheets are helpful when placing your order(s).

**HOW TO ORDER HUMPHREY VALVES AND ACCESSORIES**

- Go directly to: [www.humphrey-products.com/?q=content/find-distributor](http://www.humphrey-products.com/?q=content/find-distributor)
- Or, visit [www.humphrey-products.com](http://www.humphrey-products.com), select "Find A Distributor," and input your information to locate a distributor nearest you.
  - Or, call Customer Service at 1-800-477-8707 for the name and phone number of your local distributor.

**HUMPHREY PRODUCTS ARE SOLD WORLD-WIDE THROUGH AUTHORIZED DISTRIBUTORS**

**SPECIFICATIONS**

Design Principle:	Pressure Unbalanced – Air Return, Spring Assist
Porting Type:	2- or 3-Way
Port Size:	1/4 PIPE
Media:	Air
Pressure Range:	30–125 PSIG
Temperature Range:	40°F to 125°F
Flow @100 PSIG:	40 CFM, 1132 LPM (Cv=0.7)



## 500, 590 Valves

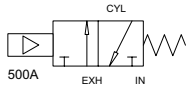
500A, 500AB, 590A, 590AB

**500 and 590 Series Air-Pilot Valves feature the classic Humphrey diaphragm-poppet principle. The unbalanced, air spring return design assures bubble-tight sealing actuated, or unactuated. Compact design permits close proximity mounting to the work and fast cycling/quick exhaust.**

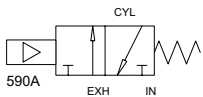
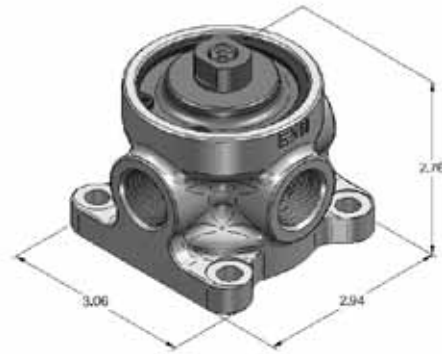
**These rugged 2- or 3-way valves are available normally closed, in cast aluminum or brass body construction. Consult factory representative for normally open.**

### Features and Benefits

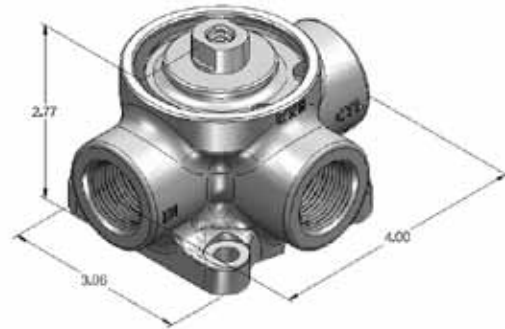
- "Bubble Tight" seal.
- Full ported 1/2" orifice, 1/2 PIPE ports, and 5/8" orifice, 3/4 PIPE ports.
- Fast cycling, high flow.
- Reliable operation in lubricated or not lubricated systems. No sliding seals.
- Hard plumb mount, or use body mounting holes.
- Buna N seals standard. Fluorocarbon seals optional.
- Booster type available for reduced pilot pressure (500AB, 590AB).



500A



590A



### SPECIFICATIONS FOR 500A AND 590A


Design Principle:	Pressure Unbalanced – Air Return, Spring Assist
Porting Type:	2- or 3-Way
Port Size:	1/2, 3/4 PIPE
Media:	Air, Inert Gas, Liquid (brass body)
Pressure Range:	0–125 PSIG
Temperature Range:	0°F to 225°F
Flow @100 PSIG:	500: 160 CFM, 4530 LPM (Cv=2.7) 590: 260 CFM, 7362 LPM (Cv=3.7)

### HOW TO OBTAIN SPECIFICATIONS FOR A PARTICULAR VALVE(S)

- ✓ Go directly to [www.humphrey-products.com/dynamic/products](http://www.humphrey-products.com/dynamic/products)
- ✓ Or, visit [www.humphrey-products.com](http://www.humphrey-products.com) and select "Online Product Guide."
- Once you have followed the steps to get the valve you need, select "Download Spec Sheet." Doing this will create a personalized PDF of the valve, which you may save to your computer and print at your convenience. These spec sheets are helpful when placing your order(s).

### HOW TO ORDER HUMPHREY VALVES AND ACCESSORIES

- ✓ Go directly to: [www.humphrey-products.com/?q=content/find-distributor](http://www.humphrey-products.com/?q=content/find-distributor)
- ✓ Or, visit [www.humphrey-products.com](http://www.humphrey-products.com), select "Find A Distributor," and input your information to locate a distributor nearest you.
- Or, call Customer Service at 1-800-477-8707 for the name and phone number of your local distributor.

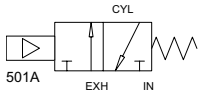
 **HUMPHREY PRODUCTS ARE SOLD WORLD-WIDE THROUGH AUTHORIZED DISTRIBUTORS**

**Humphrey piston-poppet, 501A and 501-4A, 1/2 PIPE port, Air-Pilot Valve series, achieves fully ported, high flow relative to overall size. Hard coated, cast aluminum body permits resistance to wear and easy mounting/plumbing. The pressure unbalanced piston poppet design achieves greater flow than comparable 1/2" valves and millions of trouble-free cycles.**

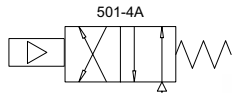
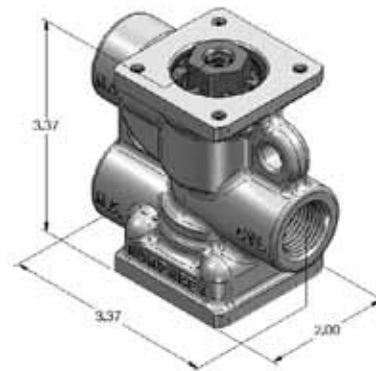
**Available as 2- or 3-way models, normally open or normally closed, and 4-way models.**

**Features and Benefits**

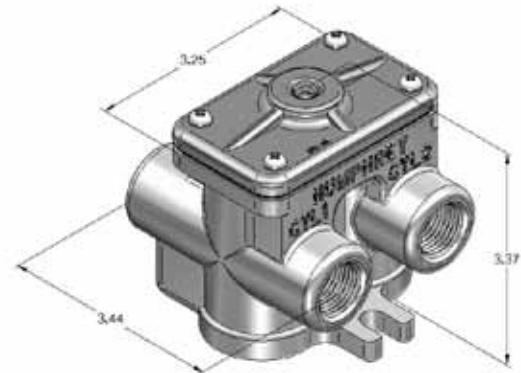
- Low leak rate.
- Full ported 1/2" orifice, 1/2 PIPE ports.
- "Flow through" construction achieves greater flow than competition.
- Short stroke and quick exhaust permits fast cycling.
- Mount in any position, via body mounting holes or base (3-way) or body mounting lugs (4-way).
- Plug for 2-way service.
- Also available as "AA" functionality (air only, see "Introduction," p. 42).



501A



501-4AA



501-4A

**HOW TO OBTAIN SPECIFICATIONS FOR A PARTICULAR VALVE(S)**

- Go directly to [www.humphrey-products.com/dynamic/products](http://www.humphrey-products.com/dynamic/products)
- Or, visit [www.humphrey-products.com](http://www.humphrey-products.com) and select "Online Product Guide."
- Once you have followed the steps to get the valve you need, select "Download Spec Sheet." Doing this will create a personalized PDF of the valve, which you may save to your computer and print at your convenience. These spec sheets are helpful when placing your order(s).

**HOW TO ORDER HUMPHREY VALVES AND ACCESSORIES**

- Go directly to: [www.humphrey-products.com/?q=content/find-distributor](http://www.humphrey-products.com/?q=content/find-distributor)
- Or, visit [www.humphrey-products.com](http://www.humphrey-products.com), select "Find A Distributor," and input your information to locate a distributor nearest you.
- Or, call Customer Service at 1-800-477-8707 for the name and phone number of your local distributor.

**Humphrey HUMPHREY PRODUCTS ARE SOLD WORLD-WIDE THROUGH AUTHORIZED DISTRIBUTORS**

**SPECIFICATIONS FOR 501A(A) AND 501-4A(A)**

Design Principle:	Pressure Unbalanced – Air Return, Spring Assist
Porting Type:	2-, 3- or 4-Way
Port Size:	1/2 PIPE
Media:	Air, Inert Gas
Pressure Range:	A= 0–125 PSIG; AA=15–125 PSIG
Temperature Range:	-30°F to 225°F
Flow @100 PSIG:	501: 220 CFM, 6229 LPM (Cv=3.5) 501-4: 170 CFM, 4813 LPM (Cv=2.5)

## H110-4A and H180-4A Valves

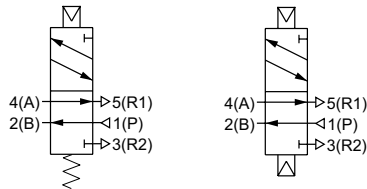
H110-4A, H110-4A2, HA110-4A, HA110-4A2, H180-4A, H180-4A2, HA180-4A, HA180-4A2

**H110 and H180 Series Air-Pilot directional control valves achieve 0.23 and 0.57 Cv flow capacity in a 15mm and 18mm width. These valves are a popular choice for operating medium-size cylinders, up to 2.5" bore.**

**5-port models available as inline valves or manifold mount on two manifold configurations, A or F type.**

### Features and Benefits

- Compact 15mm and 18mm size.
- High flow.
- Clean appearance.
- Models: Single air-pilot, air spring return, or double air-pilot, detent.



Base Model	Nominal Dimensions (inch)		
	L	H	W
H(A)110-4A	1.83	0.95	0.59
H(A)110-4A2	1.97		
H(A)180-4A	2.54	1.06	0.71
H(A)180-4A2	2.76		

For information on manifolds for either of these valve series, please refer to pages 32-33.



H110-4A2, H110-4A, HA110-4A



HA180-4A2, HA180-4A, H180-4A

### SPECIFICATIONS


Design Principle:	Pressure Balanced – Air Return, Spring Assist
Porting Type:	4-Way
Port Size:	10-32 UNF, 1/8 PIPE
Media:	Air, Inert Gas
Pressure Range:	22–102 PSIG
Temperature Range:	41°F to 122°F
Flow @100 PSIG:	H110: 14 CFM, 396 LPM (Cv=0.2) H180: 33 CFM, 934 LPM (Cv=0.6)

### HOW TO OBTAIN SPECIFICATIONS FOR A PARTICULAR VALVE(S)

- Go directly to [www.humphrey-products.com/dynamic/products](http://www.humphrey-products.com/dynamic/products)
- Or, visit [www.humphrey-products.com](http://www.humphrey-products.com) and select "Online Product Guide."
- Once you have followed the steps to get the valve you need, select "Download Spec Sheet." Doing this will create a personalized PDF of the valve, which you may save to your computer and print at your convenience. These spec sheets are helpful when placing your order(s).

### HOW TO ORDER HUMPHREY VALVES AND ACCESSORIES

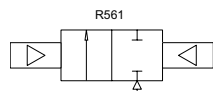
- Go directly to: [www.humphrey-products.com/?q=content/find-distributor](http://www.humphrey-products.com/?q=content/find-distributor)
- Or, visit [www.humphrey-products.com](http://www.humphrey-products.com), select "Find A Distributor," and input your information to locate a distributor nearest you.
- Or, call Customer Service at 1-800-477-8707 for the name and phone number of your local distributor.

 **HUMPHREY PRODUCTS ARE SOLD WORLD-WIDE THROUGH AUTHORIZED DISTRIBUTORS**

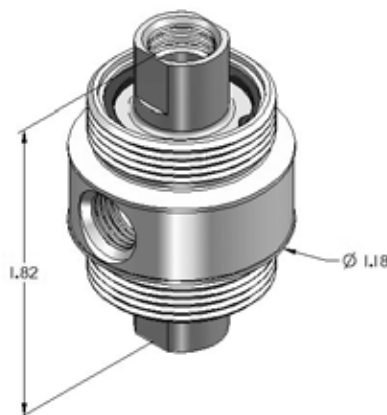
**125 and 250 Series Air-Pilot "Glue" valves feature the classic Humphrey diaphragm-poppet in a double air-pilot, 2-way configuration. The design assures a tight seal actuated, or unactuated. Compact design permits close proximity mounting to the work and fast cycling, clean performance, "suck back" when closing.**

**Features and Benefits**

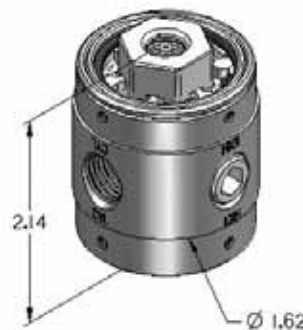
- Full ported R561, R322C 1/8" orifice and 1/8" PIPE ports, and R332 1/4" orifice, 1/4 PIPE ports.
- Fast cycling, high flow.
- Hard plumb mount, or panel mount using nuts or mounting base, via the 1"-20 UNEF body mounting threads (125 series) or mounting base (250 series).
- Fluorocarbon seals (R322C, R332); Teflon coated (R561).



**R561, R322C**



**R332**



**HOW TO OBTAIN SPECIFICATIONS FOR A PARTICULAR VALVE(S)**

- ☞ Go directly to [www.humphrey-products.com/dynamic/products](http://www.humphrey-products.com/dynamic/products)
- ☞ Or, visit [www.humphrey-products.com](http://www.humphrey-products.com) and select "Online Product Guide."
  - Once you have followed the steps to get the valve you need, select "Download Spec Sheet." Doing this will create a personalized PDF of the valve, which you may save to your computer and print at your convenience. These spec sheets are helpful when placing your order(s).

**HOW TO ORDER HUMPHREY VALVES AND ACCESSORIES**

- ☞ Go directly to: [www.humphrey-products.com/?q=content/find-distributor](http://www.humphrey-products.com/?q=content/find-distributor)
- ☞ Or, visit [www.humphrey-products.com](http://www.humphrey-products.com), select "Find A Distributor," and input your information to locate a distributor nearest you.
- Or, call Customer Service at 1-800-477-8707 for the name and phone number of your local distributor.

*Humphrey* **HUMPHREY PRODUCTS ARE SOLD WORLD-WIDE THROUGH AUTHORIZED DISTRIBUTORS**

**SPECIFICATIONS**

Design Principle:	Pressure Unbalanced – Double Air-Pilot
Porting Type:	2-Way
Port Size:	1/8, 1/4 PIPE
Media:	Glue; Consult factory representative for others
Pressure Range:	0–35 PSIG (pilot pressure: maintained and => body pressure)
Temperature Range:	-20°F to 225°F
Flow @100 PSIG:	R322C, R561: Cv=0.3, LPM=7.6 R332: Cv=0.8, LPM=22.5