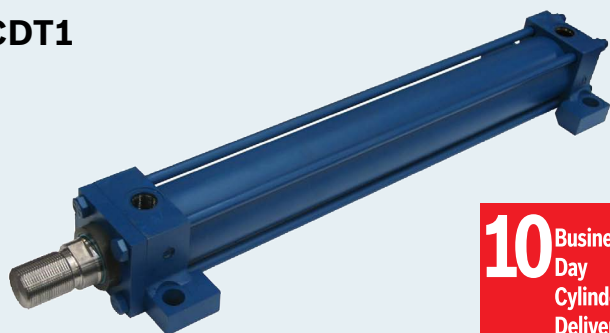


# 10 Day Cylinder Delivery Program

This program covers our CDT1 and CDT4 NFPA cylinder products based on the criteria shown below. All NFPA cylinder orders of up to 5 pieces per line item which fall under this program will ship from Bethlehem in **10** business days after receipt of order. The CDT1 and CDT4 program have been expanded to include additional port location, rod end thread, seal material and mounting options.

## CDT1



**10** Business  
Day  
Cylinder  
Delivery

## CDT4



**10** Business  
Day  
Cylinder  
Delivery

<b>Bore Sizes</b>	1-1/2" through 4"				
<b>Strokes</b>	up to 60"				
<b>Rod Sizes</b>	1 <sup>st</sup> and 2 <sup>nd</sup>				
<b>Porting</b>	SAE straight thread o-ring at quadrant 1, 2, 3 or 4 per catalog				
<b>Cushioning</b>	Both ends, <b>either end</b> , or without				
<b>Air Bleed</b>	Standard				
<b>Piston Rod Material</b>	Std. chrome plated carbon steel				
<b>Std. Rod End</b>	KK1 male, <b>KK2 male</b> , or KK1 female thread				
<b>Seal Materials</b>	Polyurethane "M", Viton "V" seal, or <b>Low Friction "T" seal</b>				
<b>Mounts</b>	MF1	MF2	MP1	MS2	MS4
	MX0	MX1	MX2	MX3	
<b>Quantity</b>	Up to 5 pieces of a given model				

<b>Bore Sizes</b>	1-1/2" through 6"						
<b>Strokes</b>	up to 60"						
<b>Rod Sizes</b>	1 <sup>st</sup> and 2 <sup>nd</sup>						
<b>Porting</b>	SAE straight thread o-ring at quadrant 1, 2, 3 or 4 per catalog						
<b>Cushioning</b>	Both ends, <b>either end</b> , or without						
<b>Air Bleed</b>	Standard						
<b>Piston Rod Material</b>	Std. chrome plated carbon steel						
<b>Std. Rod End</b>	KK1 male, <b>KK2 male</b> , or KK1 female thread						
<b>Seal Materials</b>	Polyurethane "M", Viton "V" seal, or <b>Low Friction "T" seal</b>						
<b>Mounts</b>	ME5	MF1	MF2	MP1	MS2	MS4	ME6
	<b>MF5</b>	<b>MF6</b>	MX0	MX1	MX2	MX3	
<b>Quantity</b>	Up to 5 pieces of a given model						